

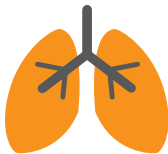
# About your Soprobec® medication



## Soprobec (beclometasone dipropionate) and asthma

Your doctor has prescribed Soprobec to help you manage your asthma. Soprobec is what's known as a **preventer** medicine. It is prescribed by doctors to help prevent symptoms such as wheezing and breathlessness by reducing inflammation of the airways in the lungs.<sup>1</sup>

### PREVENTERS WORK BY



Reducing inflammation  
in the lungs



Helping to ease  
breathing problems



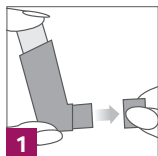
Helping with long-term  
asthma management

## How to use your inhaler

Using your Soprobec inhaler should be simple, but it is important to know how to use it properly. Your doctor, nurse or pharmacist will check regularly that you are using it correctly. If you are unsure about anything or have any problems inhaling, ask them for advice.

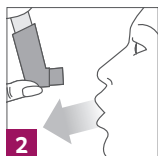
You will also find instructions on using your inhaler in the Patient Information Leaflet (PIL) that comes with every pack. Please read the PIL carefully and ask your doctor, nurse or pharmacist if you have any questions.

# Using your inhaler - a step by step guide<sup>1</sup>

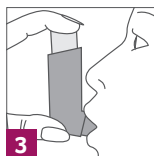


To remove the mouthpiece cover, hold between your thumb and forefinger, squeeze gently and pull apart as shown. Check inside and outside to make sure that the mouthpiece is clean, and that there are no foreign objects.

**Testing your inhaler:** If the inhaler is new, or if it has not been used for three days or more, one puff should be released into the air to make sure that it works.



Hold the inhaler upright as shown, with your thumb on the base, below the mouthpiece. Breathe out as far as is comfortable.

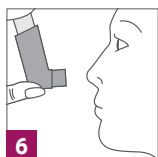


Place the mouthpiece in your mouth between your teeth and close your lips around it but do not bite it.

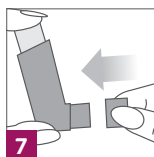


Just after starting to breathe in through your mouth, press down on the top of the inhaler to release a puff while still breathing in **steadily and deeply**.

Hold your breath; take the inhaler from your mouth and your finger from the top of the inhaler. Continue holding your breath for a few seconds or as long as is comfortable. **Breathe out slowly.**



If you are to take another puff, keep the inhaler upright and wait about half a minute before repeating steps 2 to 5.



After use, always replace the mouthpiece cover to keep out dust and fluff.

**Replace firmly and snap into position.**

## **Important: Do not rush steps 2, 3, 4 and 5.**

Please read the Patient Information Leaflet (PIL) supplied with your medicine carefully. It contains more information.

A device called a Volumatic™ spacer should always be used when:

- adults, the elderly and adolescents 16 years of age and older are taking total daily Soprobecc doses of 1000 mcg or more
- Soprobecc is used in children and adolescents 15 years of age and under, whatever dose has been prescribed

## Find more information at [soprobecc.co.uk/patient](https://www.soprobecc.co.uk/patient)

### Reporting of side effects

If you experience any side effects, talk to your doctor, pharmacist or nurse. This includes any side effects not listed in the package leaflet. You can also report side effects directly via the Yellow Card Scheme at [www.mhra.gov.uk/yellowcard](https://www.mhra.gov.uk/yellowcard). By reporting side effects, you can help provide more information on the safety of this medicine.

Reference: 1. Soprobecc Patient Information Leaflet.

Soprobecc® is a registered trademark of Glenmark Pharmaceuticals Europe Limited.

Volumatic™ is a trademark of the GlaxoSmithKline group of companies.

This leaflet has been produced by Glenmark Pharmaceuticals Europe Ltd.

© 2022 Glenmark Pharmaceuticals Europe Ltd. All rights reserved.

Date of preparation: August 2022

NP-UK-SOP-0010 V3

